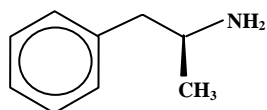
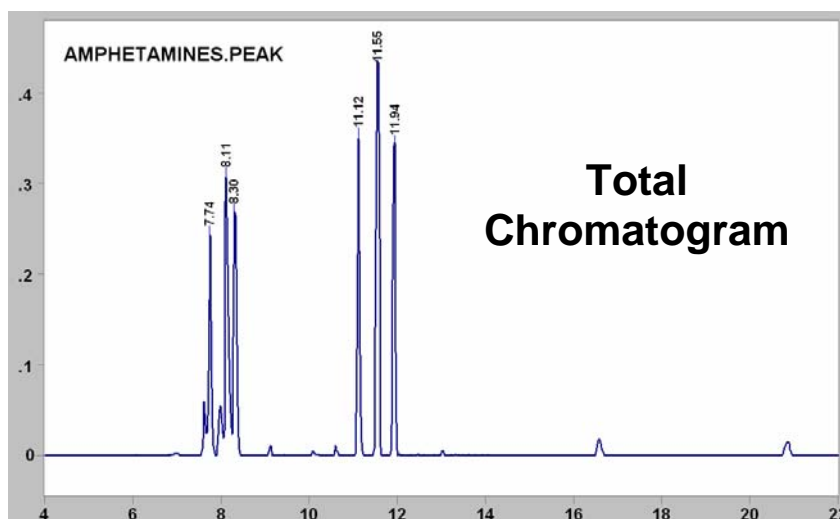
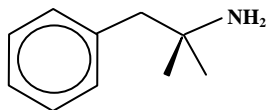




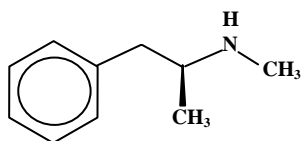
Selective Detection using Band Chromatograms



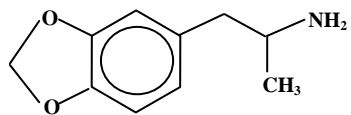
Amphetamine



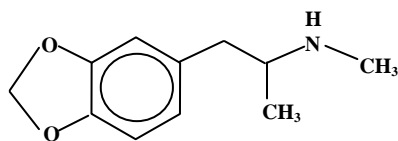
Phentermine



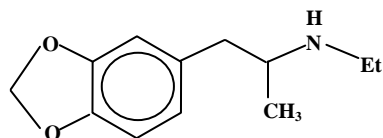
Methamphetamine



MDA (MethyleneDioxyAmphetamine)



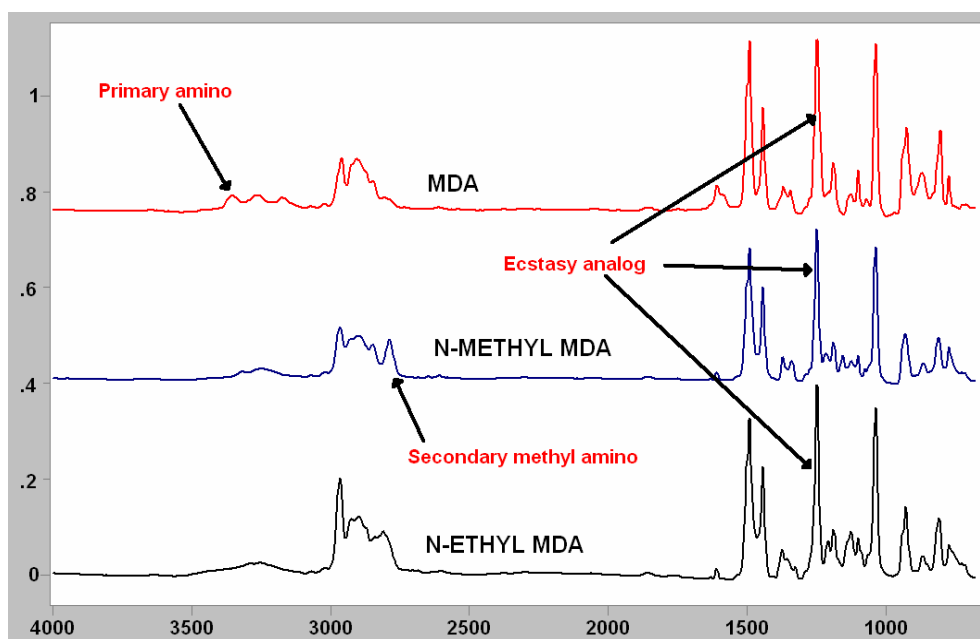
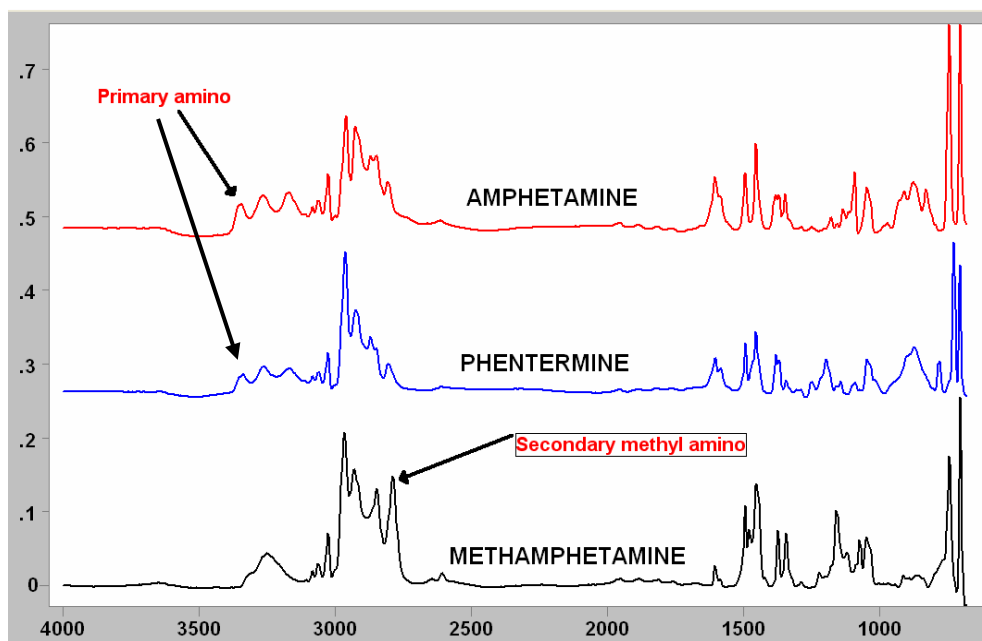
MDMA (N-Methyl MDA)



N-Ethyl MDA



Infrared Spectra



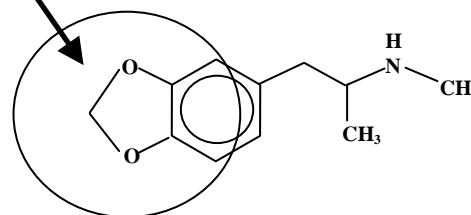
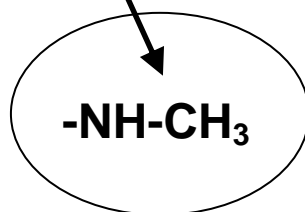
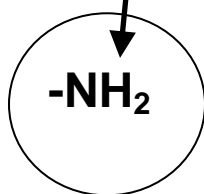
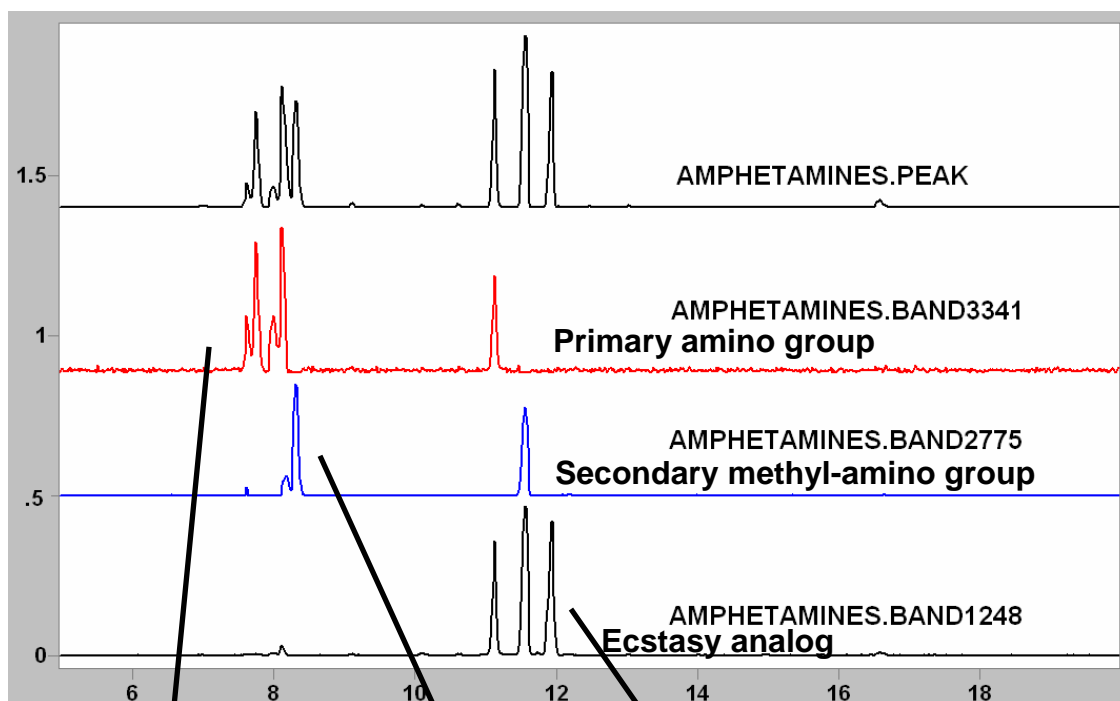


Selective Detection using Band Chromatograms

Application Note 014

May 2007

The sample of six amphetamine-related compounds, separated by gas chromatography, gave six distinct peaks. Three of the compounds contain a primary amino group, two of them contain a methyl group attached to a secondary amino nitrogen, while the last three eluting compounds contain the dioxycyclopentane ring. The chromatograms below demonstrate how Band Chromatograms based on each of these functional groups can select subsets of the compounds from the full chromatogram.



www.spectra-analysis.com